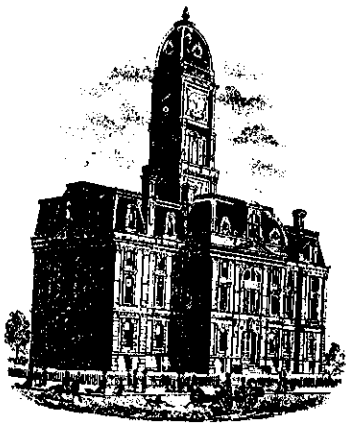


Drain: FAIRFIELD FARMS DRAIN **Drain #:** 242
Improvement/Arm: FAIRFIELD FARMS - SECTION 2
Operator: JDH **Date:** 12-12-03
Drain Classification: Urban/Rural **Year Installed:** 1992

GIS Drain Input Checklist

- Pull Source Documents for Scanning JDH 12-12
- Digitize & Attribute Tile Drains N/A
- Digitize & Attribute Storm Drains JDH 12-12
- Digitize & Attribute SSD N/A
- Digitize & Attribute Open Ditch JDH 12-12
- Stamp Plans JDH 12-12
- Sum drain lengths & Validate JDH 12-12
- Enter Improvements into Posse JDH 12-12
- Enter Drain Age into Posse _____
- Sum drain length for Watershed in Posse _____
- Check Database entries for errors JDH 12-12



SURVEYOR'S OFFICE

Hamilton County

Kenton C. Ward, Surveyor

776-9626

942 Maple Avenue

Noblesville, Indiana 46060

February 7, 1992

TO: Hamilton County Drainage Board

RE: Fairfield Farms Drain-Section 2

Attached is a petition, non-enforcement request, plans, calculations, quantity summary and assessment roll for the Fairfield Farms Drain-Section 2

I have reviewed the submittals and petition and have found each to be in proper form. I have made a personal inspection of the land described in the petition. Upon doing so, I believe that the drain is practicable; will improve the public health; benefit a public highway and be of public utility; and that the costs, damages and expenses of the proposed drain will probably be less than the benefits accruing to the owners of land likely to be benefitted. The drain will consist of the following:

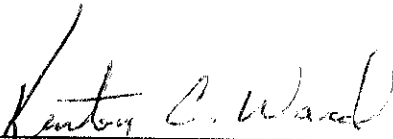
Concrete Ditch	595 ft	RCP-15"	487 ft
RCP-12"	1031 ft	RCP-18"	548 ft

The total length of the drain will be 2651 feet.

The drainage facilities shown above as concrete ditch is that shown in the detention facility at the rear of Lots 55,56,57, and between Lots 57 and 58 and that shown on Sheet S-11, through the detention facility which abuts the West property line of Lot 92. The detention facilities shall not be maintained as regulated drain outside of this ditch. Other than to ensure no unauthorized structure or filling occurs which will be detrimental to the facilities capacity and function. The homeowners are responsible for the maintenance of the detention facilities.

I have reviewed the plans and believe the drain will benefit each lot equally. I recommend a maintenance assessment of \$30.00 per lot, \$5.00 per acre for roadways, with a \$30.00 minimum. With this assessment the total annual assessment for the drain/this section will be \$ 1333.06.

I recommend a hearing be set for April 1992. I also recommend the Board approve the attached non-enforcement request if approved at hearing.



Kenton C. Ward
Hamilton County Surveyor

STATE OF INDIANA)
)
COUNTY OF HAMILTON)

TO: HAMILTON COUNTY DRAINAGE BOARD
% Hamilton County Surveyor, Courthouse, Noblesville, IN 46060

In the matter of FAIRFIELD FARMS Subdivision,
Section 2 Drain Petition.

Petitioner is the owner of all lots in the land affected by the proposed new regulated drain. The drainage will affect various lots in FAIRFIELD FARMS, a subdivision in Hamilton County, Indiana. The general route of such drainage shall be in existing easements and along public roads as shown in the plans on file in the Surveyor's Office.

Petitioner believes that the cost, damages and expenses of the proposed improvement will be less than the benefits which will result to the owners of the land likely to be benefited thereby. Petitioner believes the proposed improvements will:

- (a) improve public health
- (b) benefit a public street
- (c) be of public utility


Petitioner agrees to pay the cost of construction of the drainage system and requests periodic maintenance assessments by the Board thereafter.

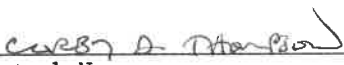
The Petitioner also agrees to the following:

1. To provide the Drainage Board a Performance Bond for the portion of the drainage system which will be made a regulated drain. The bond will be in the amount of 100% of the Engineers estimate. The bond will be in effect until construction of 100% of the system is completed and so certified by the Engineer.
2. The Petitioner shall retain an Engineer throughout the construction phase. At completion of the project the Petitioner's Engineer shall certify that the drainage system which is to be maintained as a regulated drain has been constructed as per construction plans.

3. The Petitioner agrees to request in writing to the County Surveyor any changes from the approved plan and must receive written authorization from the County Surveyor prior to implementation of the change. All changes shall be documented and given to the Surveyor to be placed in the Drain File.
4. The Petitioner shall instruct his Engineer to provide a reproducible print on a 24" x 36" mylar of the final design of the Drainage System. This shall be submitted to the County Surveyor prior to the release of the Performance Bond.
5. The Petitioner shall comply with the Erosion Control Plan as as specified on the construction plans. Failure to comply with the Erosion Control Plan shall be determined by the Board as being an obstruction to the drainage system. The County Surveyor shall immediately install or repair the needed measures at Petitioners cost as per IC 36-9-27-46.

The Petitioner further requests that the Drain be classified as an Urban Drain.


Signed _____


Printed Name _____

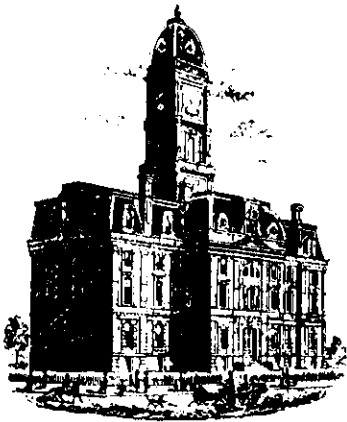
Signed

Printed Name

RECORDED OWNER(S) OF LAND INVOLVED

DATE

 1/31/92



SURVEYOR'S OFFICE
Hamilton County

Kenton C. Ward, Surveyor

Phone (317) 776-8495

Fax (317) 776-9628

Suite 146

One Hamilton County Square

Noblesville, Indiana 46060-2230

To: Hamilton County Drainage Board

September 17, 1997

Re: **Fairfield Farms Drain: Sec. 2 arm**

Attached are as-builts, certificate of completion & compliance, and other information for Fairfield Farms Sec. 2. An inspection of the drainage facilities for this section has been made and the facilities were found to be complete and acceptable.

During construction, changes were made to the drain which will alter the plans submitted with my report for this drain dated February 7, 1992. The changes are as follows:
12" RCP 1063 feet 15" RCP 628 feet 18" RCP 633 feet
Concrete Swale 595 feet

The length of the drain due to the changes described above is now **2,919 feet**.

The non-enforcement was approved by the Board at its meeting on April 20, 1992 and recorded under instrument #9215125.

The bond or letter of credit was not required.

I recommend the Board approve the drains construction as complete and acceptable.

Sincerely,

Kenton C. Ward,
Hamilton County Surveyor

KCW/slm

Asbuilt Structures

Project: FAIRFIELD FARMS SEC. 2

Structure: T.C.: I.E.: Pipe: Length: Original Plans: Difference:

213	774.30	771.81				
216	774.65	771.59	12"	83'	FRM 86'	
216	774.65	771.40				
215	774.68	771.30	15"	31'	FRM 30'	
215	774.68	771.30				
214	—	770.59	15"	151'	/	
206	772.99	770.04				
205	772.87	769.70	12"	123'	FRM 124'	
205	772.87	769.70				
204	772.90	769.57	12"	39'	FRM 40'	
204	772.90	769.47				
202	772.83	769.31	15"	44'	/	
202	772.83	769.31				
201	—	768.31	15"	178'	FRM 179'	
202	772.83	769.70				
203	772.98	769.78	12"	41'	FRM 40'	
210	772.94	770.59				
209	773.53	769.68	12"	42'	FRM 41'	

6" SSD Streets:

Total: _____

RCP Pipe Totals:

6" SSD Lots:

Total: _____

Other Drain:

Total Length of Drain: _____

Asbuilt Structures

Project: FARFIELD FARMS SEC. 2

Structure: T.C.: I.E.: Pipe: Length: Original Plans: Difference:

211	772.91	770.45				
209	773.53	770.28	12"	41'	/	
209	773.53	769.68				
208	774.02	769.57	18"	52'	/	FRM 50'
208	774.02	769.57				
207	-	769.34	18"	112'	/	FRM 114'
227	783.91	781.39				
226	784.01	781.21	12"	31'	/	FRM 30'
226	784.01	781.21				
225	784.24	780.81	12"	101'	/	FRM 103'
225	784.24	780.81				
224	782.49	779.79	12"	101'	/	FRM 102'
223	775.54	772.88				
222	775.52	772.71	12"	30'	/	
222	775.52	772.71				
221	774.00	771.26	12"	135'	/	
221	774.00	771.26				
220	773.50	770.05	18"	163'	/	

6" SSD Streets:

Total: _____

RCP Pipe Totals:

6" SSD Lots:

Total: _____

Other Drain:

Total Length of Drain: _____

FAIRFIELD FARMS SECTION 2

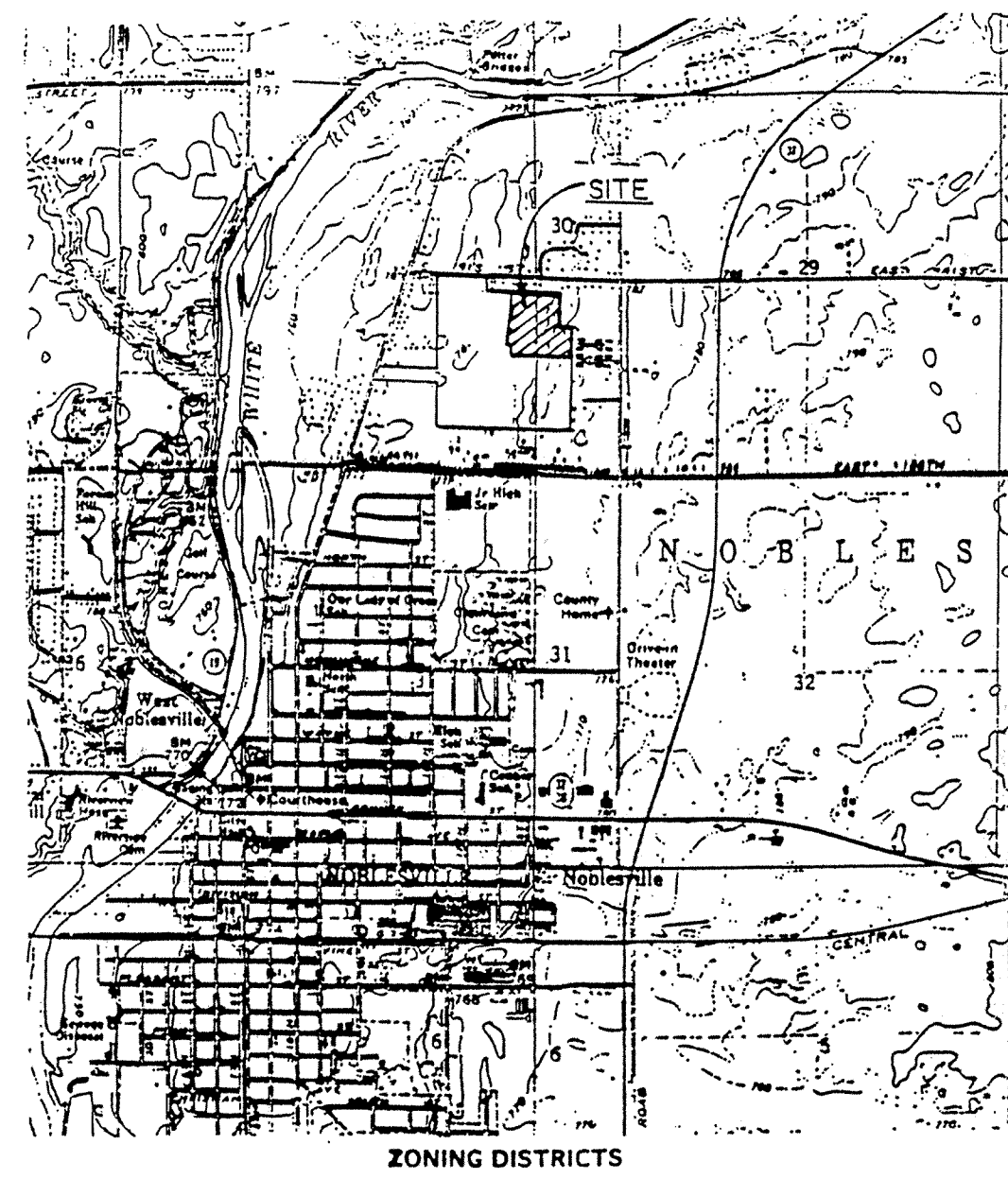
(CONSTRUCTION PLANS) HAMILTON COUNTY, INDIANA

DEVELOPER:

THOMPSON LAND CO., INC.
11911 LAKESIDE DRIVE
FISHERS, INDIANA 46038
(317) 849-7607

Engineer:

SCHNEIDER ENGINEERING CORP.
3020 NORTH POST ROAD
INDIANAPOLIS, INDIANA 46226
(317) 898-8282

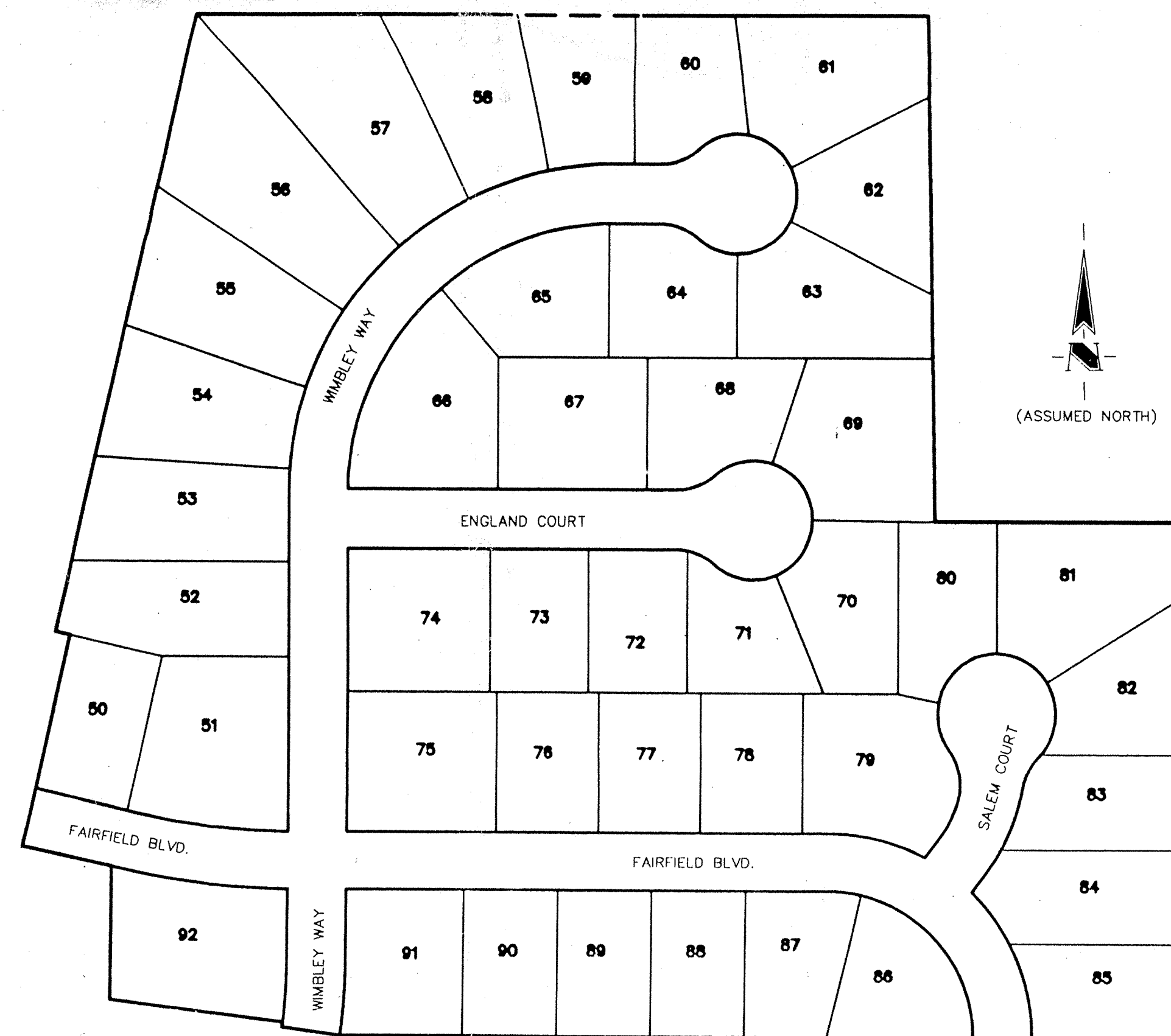


RESIDENTIAL		BUSINESS	
SINGLE FAMILY	R1 - SINGLE	PRO - PROFESSIONAL	PRO - PROFESSIONAL
LOW DENSITY	R2 - SOCIAL	REO - RESEARCH AND OFFICE	REO - RESEARCH AND OFFICE
	R3 - SUBURBAN	SO - SOCIAL	SO - SOCIAL
	R4 - MODERATE DENSITY	SO - SOCIAL	SO - SOCIAL
	R5 - HIGH DENSITY	SO - SOCIAL	SO - SOCIAL
	R6 - HIGH DENSITY	SO - SOCIAL	SO - SOCIAL
	R7 - HIGH DENSITY	SO - SOCIAL	SO - SOCIAL
	R8 - HIGH DENSITY	SO - SOCIAL	SO - SOCIAL
	R9 - HIGH DENSITY	SO - SOCIAL	SO - SOCIAL
	R10 - HIGH DENSITY	SO - SOCIAL	SO - SOCIAL
	R11 - HIGH DENSITY	SO - SOCIAL	SO - SOCIAL
	R12 - HIGH DENSITY	SO - SOCIAL	SO - SOCIAL
	R13 - HIGH DENSITY	SO - SOCIAL	SO - SOCIAL
	R14 - HIGH DENSITY	SO - SOCIAL	SO - SOCIAL
	R15 - HIGH DENSITY	SO - SOCIAL	SO - SOCIAL
	R16 - HIGH DENSITY	SO - SOCIAL	SO - SOCIAL
	R17 - HIGH DENSITY	SO - SOCIAL	SO - SOCIAL
	R18 - HIGH DENSITY	SO - SOCIAL	SO - SOCIAL
	R19 - HIGH DENSITY	SO - SOCIAL	SO - SOCIAL
	R20 - HIGH DENSITY	SO - SOCIAL	SO - SOCIAL
	R21 - HIGH DENSITY	SO - SOCIAL	SO - SOCIAL
	R22 - HIGH DENSITY	SO - SOCIAL	SO - SOCIAL
	R23 - HIGH DENSITY	SO - SOCIAL	SO - SOCIAL
	R24 - HIGH DENSITY	SO - SOCIAL	SO - SOCIAL
	R25 - HIGH DENSITY	SO - SOCIAL	SO - SOCIAL
	R26 - HIGH DENSITY	SO - SOCIAL	SO - SOCIAL
	R27 - HIGH DENSITY	SO - SOCIAL	SO - SOCIAL
	R28 - HIGH DENSITY	SO - SOCIAL	SO - SOCIAL
	R29 - HIGH DENSITY	SO - SOCIAL	SO - SOCIAL
	R30 - HIGH DENSITY	SO - SOCIAL	SO - SOCIAL
	R31 - HIGH DENSITY	SO - SOCIAL	SO - SOCIAL
	R32 - HIGH DENSITY	SO - SOCIAL	SO - SOCIAL
	R33 - HIGH DENSITY	SO - SOCIAL	SO - SOCIAL
	R34 - HIGH DENSITY	SO - SOCIAL	SO - SOCIAL
	R35 - HIGH DENSITY	SO - SOCIAL	SO - SOCIAL
	R36 - HIGH DENSITY	SO - SOCIAL	SO - SOCIAL
	R37 - HIGH DENSITY	SO - SOCIAL	SO - SOCIAL
	R38 - HIGH DENSITY	SO - SOCIAL	SO - SOCIAL
	R39 - HIGH DENSITY	SO - SOCIAL	SO - SOCIAL
	R40 - HIGH DENSITY	SO - SOCIAL	SO - SOCIAL
	R41 - HIGH DENSITY	SO - SOCIAL	SO - SOCIAL
	R42 - HIGH DENSITY	SO - SOCIAL	SO - SOCIAL
	R43 - HIGH DENSITY	SO - SOCIAL	SO - SOCIAL
	R44 - HIGH DENSITY	SO - SOCIAL	SO - SOCIAL
	R45 - HIGH DENSITY	SO - SOCIAL	SO - SOCIAL
	R46 - HIGH DENSITY	SO - SOCIAL	SO - SOCIAL
	R47 - HIGH DENSITY	SO - SOCIAL	SO - SOCIAL
	R48 - HIGH DENSITY	SO - SOCIAL	SO - SOCIAL
	R49 - HIGH DENSITY	SO - SOCIAL	SO - SOCIAL
	R50 - HIGH DENSITY	SO - SOCIAL	SO - SOCIAL
	R51 - HIGH DENSITY	SO - SOCIAL	SO - SOCIAL
	R52 - HIGH DENSITY	SO - SOCIAL	SO - SOCIAL
	R53 - HIGH DENSITY	SO - SOCIAL	SO - SOCIAL
	R54 - HIGH DENSITY	SO - SOCIAL	SO - SOCIAL
	R55 - HIGH DENSITY	SO - SOCIAL	SO - SOCIAL
	R56 - HIGH DENSITY	SO - SOCIAL	SO - SOCIAL
	R57 - HIGH DENSITY	SO - SOCIAL	SO - SOCIAL
	R58 - HIGH DENSITY	SO - SOCIAL	SO - SOCIAL
	R59 - HIGH DENSITY	SO - SOCIAL	SO - SOCIAL
	R60 - HIGH DENSITY	SO - SOCIAL	SO - SOCIAL
	R61 - HIGH DENSITY	SO - SOCIAL	SO - SOCIAL
	R62 - HIGH DENSITY	SO - SOCIAL	SO - SOCIAL
	R63 - HIGH DENSITY	SO - SOCIAL	SO - SOCIAL
	R64 - HIGH DENSITY	SO - SOCIAL	SO - SOCIAL
	R65 - HIGH DENSITY	SO - SOCIAL	SO - SOCIAL
	R66 - HIGH DENSITY	SO - SOCIAL	SO - SOCIAL
	R67 - HIGH DENSITY	SO - SOCIAL	SO - SOCIAL
	R68 - HIGH DENSITY	SO - SOCIAL	SO - SOCIAL
	R69 - HIGH DENSITY	SO - SOCIAL	SO - SOCIAL
	R70 - HIGH DENSITY	SO - SOCIAL	SO - SOCIAL
	R71 - HIGH DENSITY	SO - SOCIAL	SO - SOCIAL
	R72 - HIGH DENSITY	SO - SOCIAL	SO - SOCIAL
	R73 - HIGH DENSITY	SO - SOCIAL	SO - SOCIAL
	R74 - HIGH DENSITY	SO - SOCIAL	SO - SOCIAL
	R75 - HIGH DENSITY	SO - SOCIAL	SO - SOCIAL
	R76 - HIGH DENSITY	SO - SOCIAL	SO - SOCIAL
	R77 - HIGH DENSITY	SO - SOCIAL	SO - SOCIAL
	R78 - HIGH DENSITY	SO - SOCIAL	SO - SOCIAL
	R79 - HIGH DENSITY	SO - SOCIAL	SO - SOCIAL
	R80 - HIGH DENSITY	SO - SOCIAL	SO - SOCIAL
	R81 - HIGH DENSITY	SO - SOCIAL	SO - SOCIAL
	R82 - HIGH DENSITY	SO - SOCIAL	SO - SOCIAL
	R83 - HIGH DENSITY	SO - SOCIAL	SO - SOCIAL
	R84 - HIGH DENSITY	SO - SOCIAL	SO - SOCIAL
	R85 - HIGH DENSITY	SO - SOCIAL	SO - SOCIAL
	R86 - HIGH DENSITY	SO - SOCIAL	SO - SOCIAL
	R87 - HIGH DENSITY	SO - SOCIAL	SO - SOCIAL
	R88 - HIGH DENSITY	SO - SOCIAL	SO - SOCIAL
	R89 - HIGH DENSITY	SO - SOCIAL	SO - SOCIAL
	R90 - HIGH DENSITY	SO - SOCIAL	SO - SOCIAL
	R91 - HIGH DENSITY	SO - SOCIAL	SO - SOCIAL
	R92 - HIGH DENSITY	SO - SOCIAL	SO - SOCIAL
	R93 - HIGH DENSITY	SO - SOCIAL	SO - SOCIAL
	R94 - HIGH DENSITY	SO - SOCIAL	SO - SOCIAL
	R95 - HIGH DENSITY	SO - SOCIAL	SO - SOCIAL
	R96 - HIGH DENSITY	SO - SOCIAL	SO - SOCIAL
	R97 - HIGH DENSITY	SO - SOCIAL	SO - SOCIAL
	R98 - HIGH DENSITY	SO - SOCIAL	SO - SOCIAL
	R99 - HIGH DENSITY	SO - SOCIAL	SO - SOCIAL
	R100 - HIGH DENSITY	SO - SOCIAL	SO - SOCIAL

SYMBOL	NAME	SYMBOL	NAME
Br	Brookston silty clay loam	NnA	Nineveh loam, 0 to 2 percent slopes
CIA	Crosby silt loam, 0 to 3 percent slopes	OCA	Ockley silt loam, 0 to 2 percent slopes
FaA	Fox loam, 0 to 2 percent slopes	OcbZ	Ockley silt loam, 2 to 6 percent slopes, eroded
FaB2	Fox loam, 2 to 6 percent slopes, eroded	Or	Orments
FaC3	Fox clay loam, 8 to 18 percent slopes, severely eroded	Pa	Palms muck
Ge	Genesee silt loam	Pn	Patton silty clay loam
HaF	Hennepin loam, 18 to 50 percent slopes	Ps	Patton silty clay loam, limestone substratum
Ho	Houghton muck	Pls	Pls
MmA	Miami silt loam, 0 to 2 percent slopes	Ra	Randolph Variant silt loam
MmB2	Miami silt loam, 2 to 6 percent slopes, eroded	Ro	Ross loam
MmC2	Miami silt loam, 6 to 12 percent slopes, eroded	Sh	Sheals silt loam
MmD2	Miami silt loam, 12 to 18 percent slopes, eroded	Sl	Sleeth loam
MmC3	Miami clay loam, 6 to 12 percent slopes, severely eroded	Sa	Sloan silty clay loam, sandy substratum
MmD3	Miami clay loam, 12 to 18 percent slopes, severely eroded	Wa	Westland silty clay loam
MxA	Milton Variant silt loam, 0 to 2 percent slopes	Wh	Whitaker loam


AREA MAP
NOT TO SCALE

SOILS MAP
NOT TO SCALE



SITE MAP
SCALE: 1"=100'

INDEX	
SHEET No.	DESCRIPTION
S-1	TITLE SHEET
S-2	TOPOGRAPHY
S-3	DEVELOPMENT PLAN
S-4	EROSION CONTROL PLAN
S-5,S-6	STREET PLAN
S-7,S-8	SANITARY SEWER PLAN
S-9,S-10	STORM SEWER PLAN
S-11	DRY DETENTION AREA
S-12	WATER DISTRIBUTION PLAN
S-13	WATER DISTRIBUTION DETAILS
S-14,S-15	GENERAL DETAILS
S-16	SPECIFICATIONS
S-17	LIFT STATION DETAIL
S-18	LIFT STATION SPECIFICATIONS



This information was gathered for input into the Hamilton County Geographical Information System. This document is considered an official record of the GIS.

Entry Date: 12-12-03

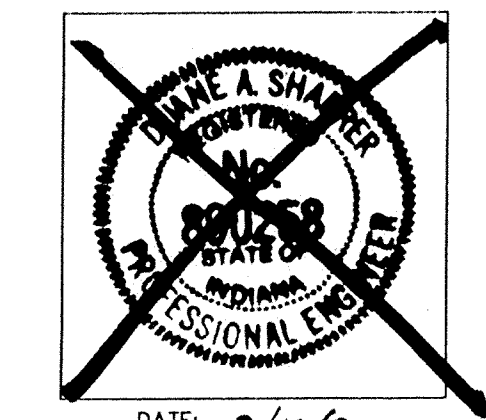
Entered by: JDH

STORM SEWER RECORD DRAWING

Schneider Engineering Corporation
CIVIL ENGINEERS — LAND SURVEYORS

3020 NORTH POST ROAD
INDIANAPOLIS, INDIANA 46226-6518
(317) 898-8282

Duane A. Sharrer
CERTIFIED BY: DUANE A. SHARRER



DATE: 9/10/91
FILED SHEET 1
SEP 11 1997 OF 18
OFFICE OF HAMILTON COUNTY SURVEYOR
(JOB No. 708.02)

PROJECT ENGINEER: JCS
CHECKED BY: JCS
DATE CHANGED: _____

STORM SEWER SCHEDULE

STR #	STA	OFFSET LT/RT	TYPE	TC	INVERTS
201	14+67.16 'A'	66.90' RT	END SECTION		768.40
202	16+31.78 'A'	20.00' RT	CURB INLET	773.00	769.47 (W&E) 769.88 (N)
203	16+31.78 'A'	20.00' LT	CURB INLET	773.00	770.00 (S)
204	16+75.57 'A'	20.00' RT	CURB INLET	773.00	769.59 (W) 769.83 (N)
205	16+75.57 'A'	20.00' LT	CURB INLET	773.00	770.03 (N&S)
206	14+02.27 'B'	50.00' RT	BEEHIVE INLET	773.40	770.40 (S)
207	2+48.87 'B'	163.61' LT	END SECTION		769.37
208	2+48.87 'B'	50.00' LT	MANHOLE		769.68 (W&E)
209	2+85.27 'B'	15.00' LT	CURB INLET	773.00	769.91 (W) 770.31 (SE) 770.27 (NE)
210	0+20.00 'C'	21.77' RT	CURB INLET	772.95	770.00 (N&S)
211	0+20.00 'C'	22.04' LT	CURB INLET	772.95	770.00 (N&S)
213	1+52.30 'C'	137.50' LT	CURB INLET	771.80	771.80 (S)
214	5+21.3 'A'	165.51' LT	END SECTION		770.46
215	5+24.19 'B'	15.00' LT	CURB INLET	774.85	771.21 (NW&SE)
216	5+21.13 'B'	15.00' LT	CURB INLET	774.83	771.29 (NW) 771.54 (SE)
217	14+83.92 'A'	88.76' RT	END SECTION		767.88
218	16+19.30 'A'	23.76' RT	CURB INLET	773.29	769.17 (E&W)
219	16+42.70 'A'	23.03' RT	CURB INLET	773.29	769.37 (E&W)
220	17+34.65 'A'	23.85' RT	BEEHIVE INLET	773.50	769.96 (NE&SE)
221	18+58.91 'A'	15.00' RT	BEEHIVE INLET	774.00	771.43 (N) 771.19 (E) 770.94 (SW)
222	18+58.91 'A'	15.00' RT	CURB INLET	775.54	772.91 (S&N)
223	18+58.91 'A'	15.00' LT	CURB INLET	775.54	773.00 (S)
224	20+82.08 'A'	150.00' RT	BEEHIVE INLET	783.00	778.33 (W) 779.96 (NE) 778.58 (E)
225	21+23.40 'A'	50.00' RT	MANHOLE	784.70	781.08 (W&E)
226	0+41.78 'E'	15.00' LT	CURB INLET	783.98	781.39 (SW&SE)
227	0+41.78 'E'	15.00' RT	CURB INLET	783.98	781.48 (NW&N)
228	23+24.54 'A'	15.00' RT	CURB INLET	784.06	779.51 (W&E)
229	23+24.54 'A'	15.00' LT	CURB INLET	784.06	779.62 (W&E)
230	23+24.54 'A'	141.74' LT	BEEHIVE INLET	783.50	780.00 (W)



This information was gathered for input into the Hamilton County Geographical Information System. This information is considered an official record of the County.

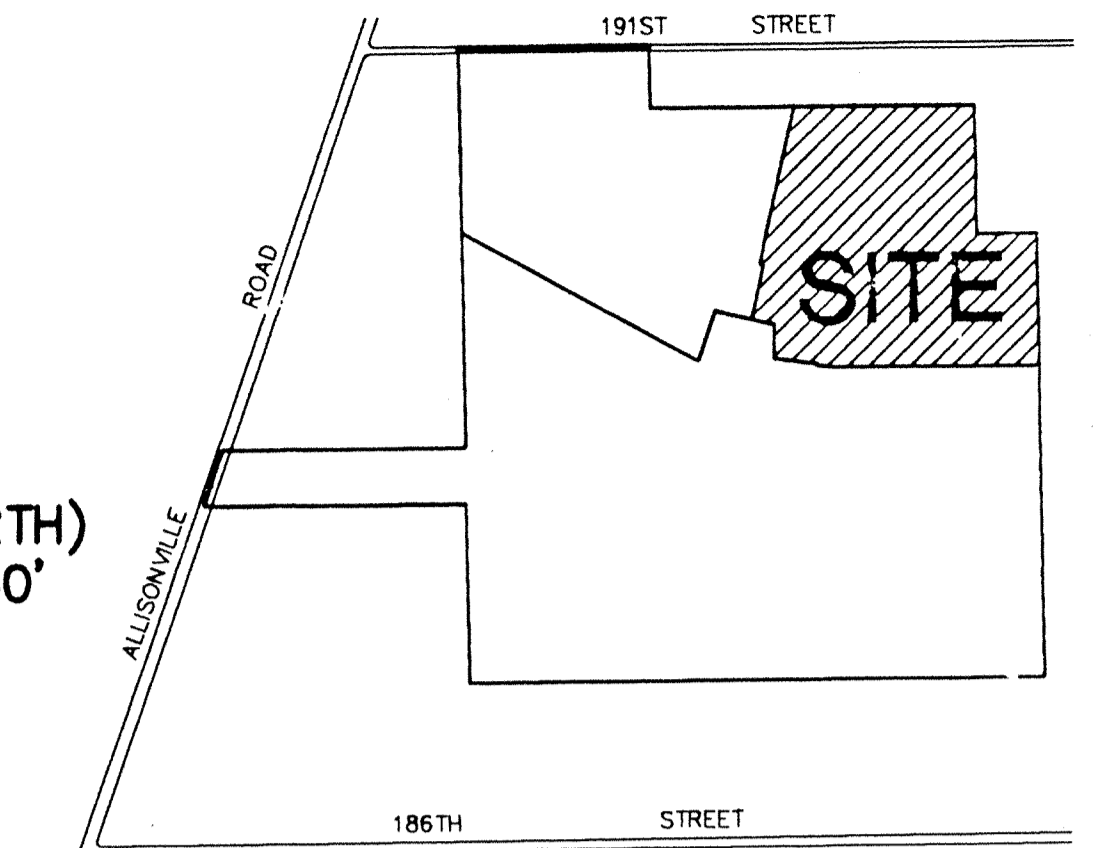
Entry Date: 12-12-03

Entered by: JDH

DRY DETENTION AREA
100 YEAR ELEV=771.80
(FOR DETAILS SEE SHEET S-11)

(ASSUMED NORTH)
SCALE: 1"=50'

LOCATION KEY MAP



BENCH MARK

BM STATE HIGHWAY BM HAM G2. SOUTHEAST CORNER 186 TH AND ALLISONVILLE DISK IN CONCRETE.

ELEVATION = 771.47

TBM 1. PIN IN 4" X 4" CONCRETE MONUMENT SOUTHEAST CORNER 186 TH AND ALLISONVILLE. 15 FEET NORTH AND 15 FEET EAST OF R/W MARKER.

ELEVATION = 770.50

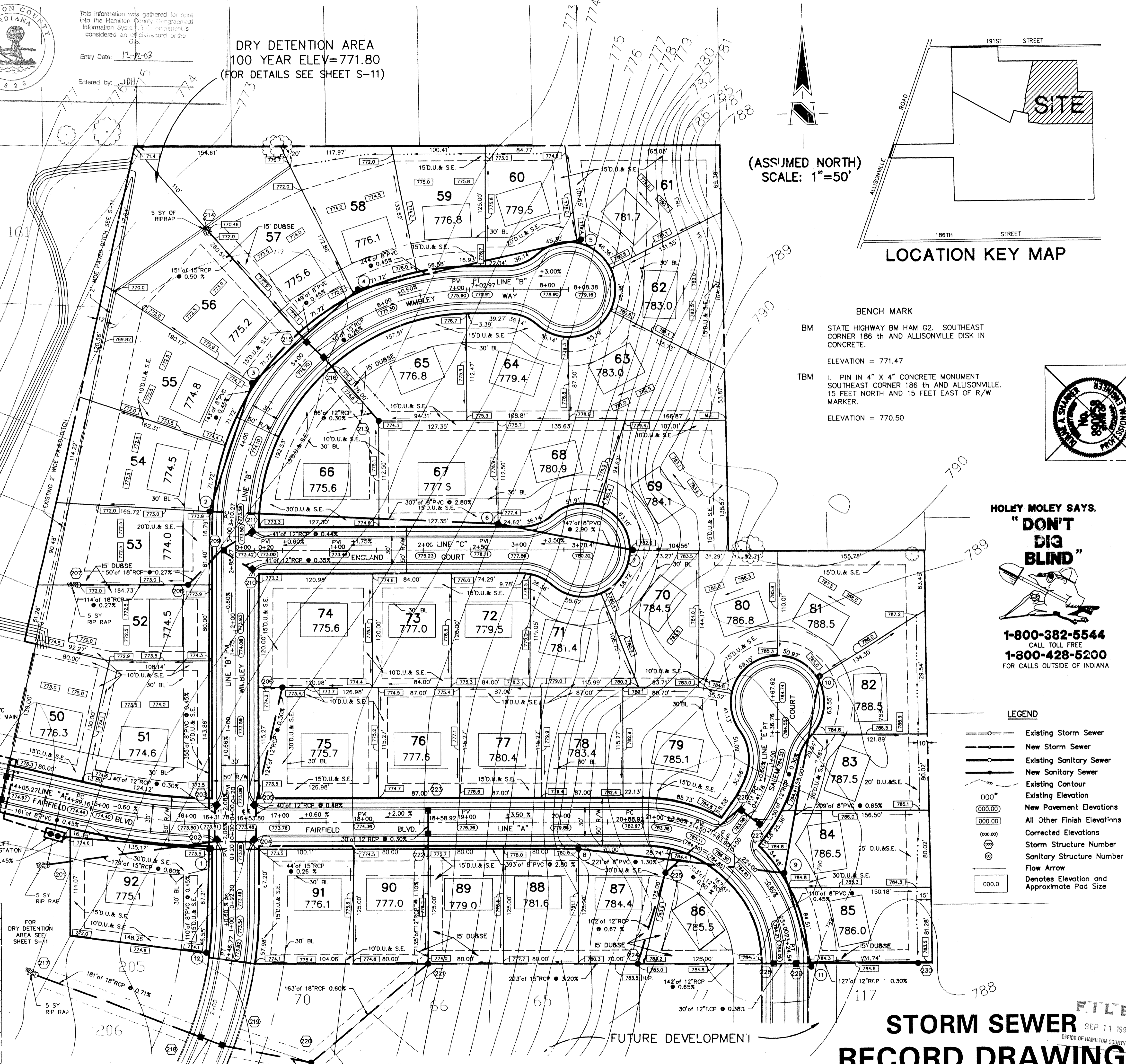
- GENERAL NOTES**
- ALL GRADES AT BOUNDARY SHALL MEET EXISTING GRADES, EXCEPT ALONG SOUTH BOUNDARY LINE OF SECTION.
 - IT SHALL BE THE RESPONSIBILITY OF EACH SUBCONTRACTOR TO VERIFY ALL EXISTING UTILITIES AND CONDITIONS PERTAINING TO HIS PHASE OF WORK. IT SHALL ALSO BE THE SUBCONTRACTOR'S RESPONSIBILITY TO CONTACT THE OWNERS OF THE VARIOUS UTILITIES FOR PROPER STAKE LOCATION OF EACH UTILITY BEFORE WORK IS STARTED. THE SUBCONTRACTOR SHALL NOTIFY IN WRITING THE OWNER OR THE ENGINEER OF ANY CHANGES, OMISSIONS, OR ERRORS FOUND ON THESE PLANS OR IN FIELD BEFORE WORK IS STARTED OR RESUMED.
 - STANDARD SPECIFICATIONS FOR THE CITY OF NOBLESVILLE, INDIANA SHALL APPLY FOR ALL SEWERS.
 - ANY PART OF THE SANITARY OR STORM SEWER TRENCHES RUNNING UNDER PAVED AREAS TO BE BACKFILLED WITH GRANULAR MATERIAL.
 - THE SIZE AND LOCATION OF EXISTING UTILITIES SHOWN ARE PER INFORMATION PROVIDED BY THE RESPECTIVE UTILITY COMPANIES. ALL UTILITY COMPANIES SHOULD BE NOTIFIED PRIOR TO ANY EXCAVATION FOR FIELD LOCATION OF SERVICES.
 - SERVICE WALKS SHALL BE NON-REINFORCED CONCRETE 4" THICK AND 4' IN WIDTH.
 - 4" CONCRETE SERVICE WALK ACROSS FRONTAGE OF EACH LOT TO BE CONSTRUCTED BY OTHERS.
 - TEMPORARY TRAFFIC CONTROL DURING CONSTRUCTION TO CONFORM TO APPLICABLE LOCAL AND STATE STANDARDS.
 - ALL CONSTRUCTION ACTIVITY ON THIS SITE TO BE PERFORMED IN COMPLIANCE WITH APPLICABLE O.S.H.A. STANDARDS FOR WORKER SAFETY.
 - CONTRACTOR SHALL MINIMIZE DAMAGE TO EXISTING TREES.

UTILITIES

ELECTRIC	WATER
PUBLIC SERVICE INDIANA 150 MILL CREEK ROAD NOBLESVILLE, INDIANA 46063 (317) 773-1980	INDIANA CITIES WATER 835 WAYNE NOBLESVILLE, INDIANA 46060 (317) 773-2861
CABLE TV INSIGHT COMMUNICATION CO. 604 UOON STREET NOBLESVILLE, INDIANA 46060 (317) 776-5660	STORM SEWER CITY OF NOBLESVILLE 16 SOUTH 19TH STREET NOBLESVILLE, INDIANA 46060 (317) 776-6325
P.S.I. ENERGY 115 MILL CREEK ROAD NOBLESVILLE, INDIANA 46063 (317) 773-1980	SANITARY SEWER CITY OF NOBLESVILLE 16 SOUTH 19TH STREET NOBLESVILLE, INDIANA 46060 (317) 776-6325
STREETS CITY OF NOBLESVILLE 16 SOUTH 19TH STREET NOBLESVILLE, INDIANA 46060 (317) 776-6325	TELEPHONE INDIANA BELL TELEPHONE CO. 3858 NORTH COLLEGE AVE. INDIANAPOLIS, INDIANA 46209 (317) 265-2878 or 1-800-382-5244
UTILITY HOTLINE WITHIN INDIANA: 1-800-382-5244 OUTSIDE INDIANA: 1-800-408-5200	

SANITARY SEWER SCHEDULE

STR #	STA	OFFSET LT/RT	TYPE	TC	INVERTS
N/A	14+67.94 'A'	35.29' RT	LIFT STATION	774.30	759.98 (E) 753.98 WET WELL
1	16+26.07 'A'	28.00' RT	MANHOLE	773.50	760.90 (N) 760.00 (S) 762.60 (E) 760.70 (W)
2	3+25.53 'B'	28.00' LT	MANHOLE	774.00	762.00 (N) 762.70 (E)
3	4+55.93 'B'	28.00' LT	MANHOLE	774.00	762.00 (N) 762.70 (E)
4	5+91.73 'B'	28.00' LT	MANHOLE	774.00	762.00 (N) 762.70 (E)
5	4+21.74 'B'	59.29' RT	MANHOLE	779.50	765.21 (SW) 764.00 (S)
6	2+79.64 'C'	28.00' RT	MANHOLE	773.50	765.21 (SW) 764.00 (S)
7	4+23.41 'C'	28.00' RT	MANHOLE	773.50	765.21 (SW) 764.00 (S)
8	20+18.91 'A'	28.00' RT	MANHOLE	780.70	773.60 (W) 774.30 (E)
9	22+38.23 'A'	28.00' RT	MANHOLE	784.80	777.27 (SE) 777.17 (W) 777.37 (NE)
10	1+95.39 'A'	138.32' RT	MANHOLE	785.10	778.73 (SW)
11	23+28.16 'A'	28.20' LT	MANHOLE	784.50	777.87 (NW) 777.97 (S) 8"STUB
12	16+24.60 'A'	138.32' RT	MANHOLE	774.20	761.40 (N) 761.50 (S) 8"STUB
EX1			EXISTING MANHOLE	776.20	771.42 (NW) 8" PVC, 771.42 4" FORCE MAIN



HOLEY MOLEY SAYS.

"DON'T DIG BLIND"

1-800-382-5544
CALL TOLL FREE

1-800-428-5200
FOR CALLS OUTSIDE OF INDIANA

- LEGEND**
- Existing Storm Sewer
 - New Storm Sewer
 - Existing Sanitary Sewer
 - New Sanitary Sewer
 - Existing Contour
 - Existing Elevation
 - New Pavement Elevations
 - All Other Finish Elevations
 - Corrected Elevations
 - Storm Structure Number
 - Sanitary Structure Number
 - Flow Arrow
 - Denotes Elevation and Approximate Pad Size

STORM SEWER RECORD DRAWING

REVISIONS

NO.	DATE	CHK'D	BY	DATE	CHECK
1	12/12/03	JDH	JDH		

BY DATE CHK'D NO. BY DATE CHECK

C.A.R. # 22/29

C.E.R. # 2/2

REVISED LOCATION OF PAVED DITCH/REVISED STIM. AND SAN. TABLES

REVISED T.C. & ELEVATIONS

REVISED E.S.'S. & RELOCATED PADS

SCALE: AS NOTED

PROJECT: FAIRFIELD FARMS SECT. 2, JOB NO. 708.02

DESIGNED BY: THOMPSON LAND CO., INC.

TITLE: DEVELOPMENT PLAN

DATE: SEP 11 1997

OFFICE OF HAMILTON COUNTY SURVEYOR

FILE

SEP 11 1997

SEP 11 1997

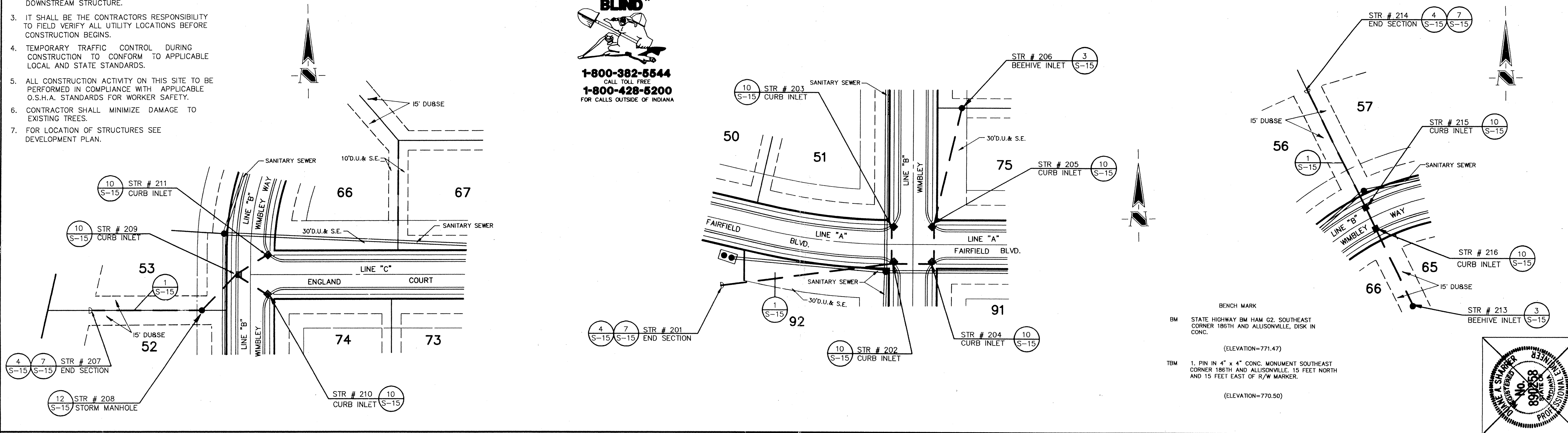
SEP 11 1997

GENERAL NOTES:

- ALL CUTS ARE TAKEN FROM THE EXISTING GRADE TO THE PIPE INVERT.
- ALL STATIONING IS TAKEN FROM THE NEAREST DOWNSTREAM STRUCTURE.
- IT SHALL BE THE CONTRACTORS RESPONSIBILITY TO FIELD VERIFY ALL UTILITY LOCATIONS BEFORE CONSTRUCTION BEGINS.
- TEMPORARY TRAFFIC CONTROL DURING CONSTRUCTION TO CONFORM TO APPLICABLE LOCAL AND STATE STANDARDS.
- ALL CONSTRUCTION ACTIVITY ON THIS SITE TO BE PERFORMED IN COMPLIANCE WITH APPLICABLE O.S.H.A. STANDARDS FOR WORKER SAFETY.
- CONTRACTOR SHALL MINIMIZE DAMAGE TO EXISTING TREES.
- FOR LOCATION OF STRUCTURES SEE DEVELOPMENT PLAN.

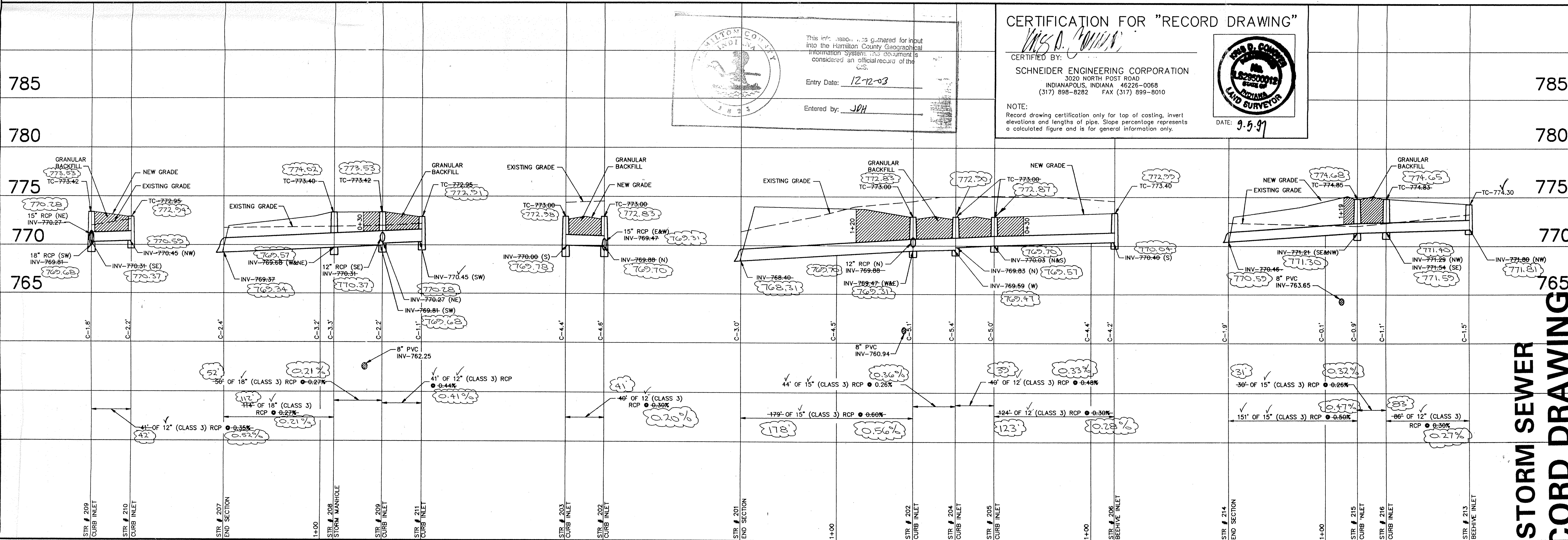
HOLEY MOLEY SAYS.
"DON'T DIG BLIND"

 CALL TOLL FREE
1-800-382-5544
1-800-428-5200
 FOR CALLS OUTSIDE OF INDIANA



STORM SEWER PLAN

SCALE: 1"=50'



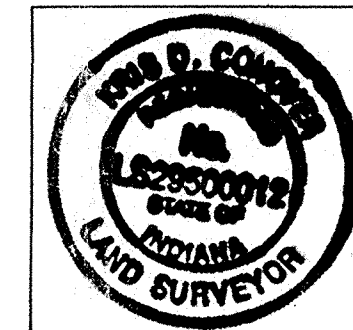
STORM SEWER PROFILE

SCALE: HORIZ.: 1"=50'
 VERT.: 1"=5'

CERTIFICATION FOR "RECORD DRAWING"

This information was gathered for input into the Hamilton County Geographical Information System. This document is considered an official record of the County.
 Entry Date: 12-12-03
 Entered by: JPH

CERTIFIED BY: *[Signature]*
 SCHNEIDER ENGINEERING CORPORATION
 3020 NORTH POST ROAD
 INDIANAPOLIS, INDIANA 46226-0068
 (317) 898-8282 FAX (317) 899-8010
 DATE: 9-9-97



NOTE:
 Record drawing certification only for top of casting, invert elevations and lengths of pipe. Slope percentage represents a calculated figure and is for general information only.

STORM SEWER RECORD DRAWING

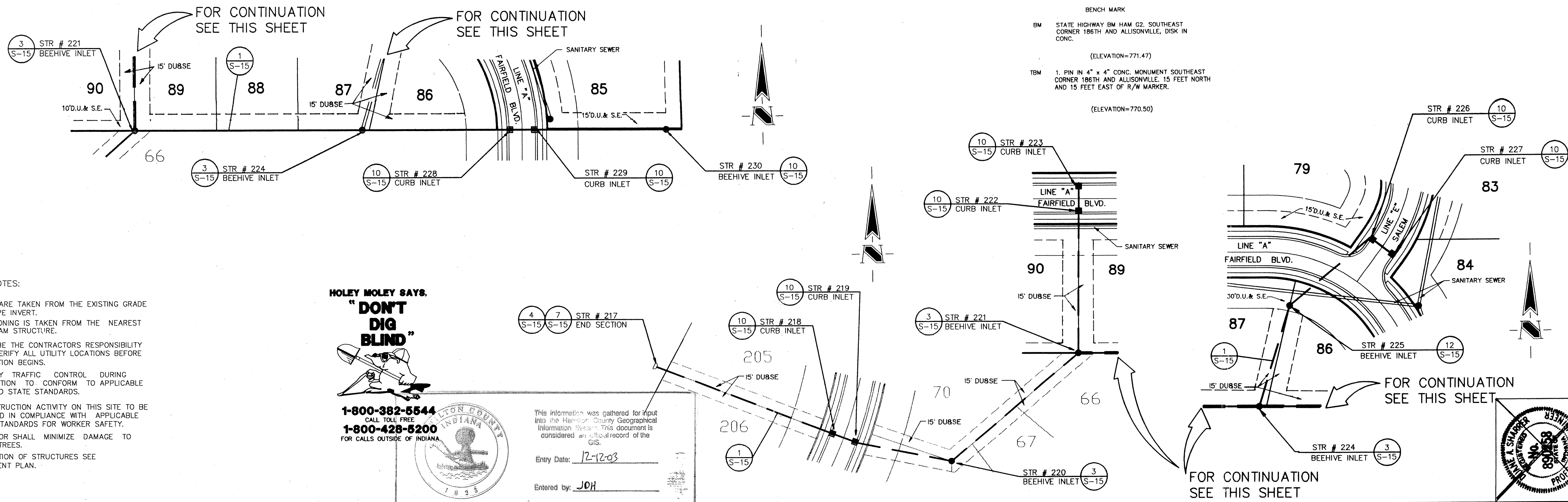
REVISIONS

NO.	DATE	BY	CHECK	DESCRIPTION
1	7/23/97	PC	PC	REVISED ESMT. 5
2	7/23/97	PC	PC	REVISED ESMT. 5
3	7/23/97	PC	PC	REVISED ESMT. 5

PROJECT: FAIRFIELD FARMS SECT 2 708.02
 PREPARED FOR: THOMPSON LAND COMPANY
 TITLE: STORM SEWER PLAN
 SCALE: AS NOTED
 SHEET 9 OF 10
 18

SCHNEIDER ENGINEERING CORPORATION
 3020 NORTH POST ROAD
 INDIANAPOLIS, INDIANA 46226-6818
 (317) 899-8282
 P.O. BOX 28068

David J. Schneider
 CERTIFIED 9/10/97



- GENERAL NOTES:
1. ALL CUTS ARE TAKEN FROM THE EXISTING GRADE TO THE PIPE INVERT.
 2. ALL STATIONING IS TAKEN FROM THE NEAREST DOWNSTREAM STRUCTURE.
 3. IT SHALL BE THE CONTRACTOR'S RESPONSIBILITY TO FIELD VERIFY ALL UTILITY LOCATIONS BEFORE CONSTRUCTION BEGINS.
 4. TEMPORARY TRAFFIC CONTROL DURING CONSTRUCTION TO CONFORM TO APPLICABLE LOCAL AND STATE STANDARDS.
 5. ALL CONSTRUCTION ACTIVITY ON THIS SITE TO BE PERFORMED IN COMPLIANCE WITH APPLICABLE O.S.H.A. STANDARDS FOR WORKER SAFETY.
 6. CONTRACTOR SHALL MINIMIZE DAMAGE TO EXISTING TREES.
 7. FOR LOCATION OF STRUCTURES SEE DEVELOPMENT PLAN.

HOLEY MOLEY SAYS.
"DON'T DIG BLIND"

1-800-382-5544
 CALL TOLL FREE
 1-800-428-5200
 FOR CALLS OUTSIDE OF INDIANA



This information was gathered for input into the Hamilton County Geographical Information System. This document is considered an official record of the GIS.

Entry Date: 12-12-03
 Entered by: JOH

BENCH MARK
 BM STATE HIGHWAY BM HAM G2, SOUTHEAST CORNER 186TH AND ALLISONVILLE, DISK IN CONC.
 (ELEVATION=771.47)
 TBM 1. PIN IN 4" x 4" CONC. MONUMENT SOUTHEAST CORNER 186TH AND ALLISONVILLE, 15 FEET NORTH AND 15 FEET EAST OF R/W MARKER.
 (ELEVATION=770.50)

STORM SEWER PLAN

SCALE: 1"=50'

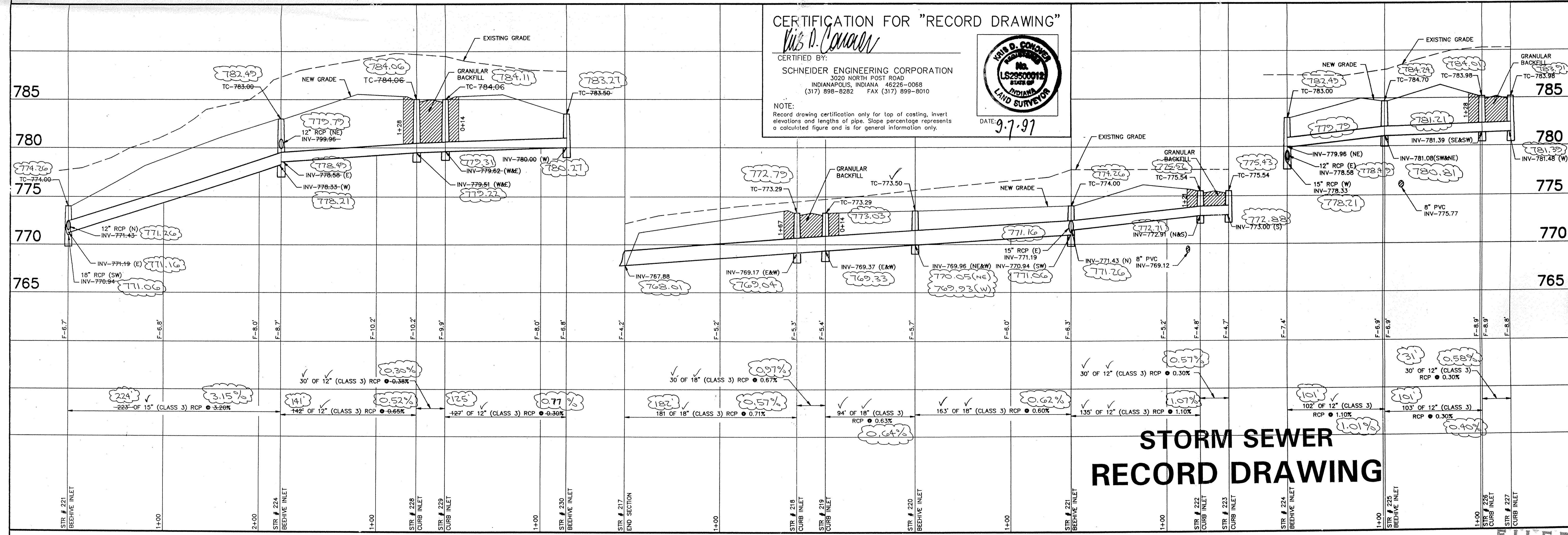
CERTIFICATION FOR "RECORD DRAWING"

CERTIFIED BY: *Vis D. Conner*

SCHNEIDER ENGINEERING CORPORATION
 3020 NORTH POST ROAD
 INDIANAPOLIS, INDIANA 46226-0068
 (317) 898-8282 FAX (317) 899-8010

NOTE:
 Record drawing certification only for top of casting, invert elevations and lengths of pipe. Slope percentage represents a calculated figure and is for general information only.

DATE: 9.7.97



STORM SEWER RECORD DRAWING

STORM SEWER PROFILE

SCALE: HORIZ.: 1"=50'
 VERT.: 1"=5'

REVISIONS

NO.	DATE	CHECK NO.	BY	DATE	CHECK
1	7/25/97		CA/RS/2/97		
2	7/25/97		CA/RS/2/97		
3	7/25/97		CA/RS/2/97		

PROJECT: FAIRFIELD FARMS SECT 2 708.02
 PREPARED FOR: THOMPSON LAND COMPANY
 TITLE: STORM SEWER PLAN

SCHNEIDER ENGINEERING CORPORATION
 3020 NORTH POST ROAD
 INDIANAPOLIS, INDIANA 46226-6818
 (317) 898-8282
 P.O. BOX 26685

DATE: 9/10/97
 CERTIFIED

SHEET 5-10 OF 18
 SEP 11 1997
 OFFICE OF HAMILTON COUNTY SURVEYOR